

# *Waterwise Native*

*Creating a native garden is something really positive you can do for the environment. As native plants are generally low water users and require little or no fertilising, they are a great environmentally friendly and Waterwise option. Planting a native garden, will also attract, feed and provide shelter for native birds, animals, butterflies and other fauna.*

## **Trees**

*As our city expands, shelter and food sources for our native fauna dwindle. By planting appropriate natives in our gardens, we can do our bit for the environment and help restore the balance.*

Blueberry Ash, Bottlebrush Kings Park Special, Cottonwood, Gum Trees, Illawarra Flame Tree, Native Frangipani, Peppermint, Wattles.

## **Shrubs**

*Planting native shrubs in your garden will make your garden a natural haven for native fauna, your sanctuary and window to the natural world. The good news is every little bit helps, you don't have to transform your entire garden, even planting a few native shrubs to provide food and shelter for birds will help.*

Bottlebrush including Captain Cook and Western Glory, Boronia, Cushion Bush, Crowea, Dwarf Peppermint, Egg and Bacon Plant (Eutaxia), Eriostemon Cascade of Stars, Flame Pea, Flinders Range Wattle, Geraldton Wax, Grevilleas including Cocnut Ice, Hookeriana, Robyn Gordon and Superb, Native Fuchsia (Correa), Tea Trees (like Leptospermum Cardwell), Wedding Bush, Westringia, and Woolly Bush.

## **Perennials**

*Native perennials provide seasonal interest to the garden and are a low water use alternative to lawn areas.*

Dampieras including Violet Princess, Dianellas including Nigra and Tasmanica, Fringe Lily, Lomandra (Mat Rush), Native Rock Daisies and Scaevola Purple Fanfare.

## **Climbers**

*Climbers give your garden extra interest and help soften and cover garden structures like sheds and fences. Native Wisteria, heralds the start of Spring, with it's magnificent show of purple pea flowers.*

Blue Bell Creeper, Golden Snake Vine, Native Wisteria, Wonga Wonga Vine.



### **FORRESTFIELD**

160 Hale Road  
Ph 94536533  
Fax 94539520

### **SWANBOURNE**

153 Railway Street  
Ph 93849652  
Fax 93832108

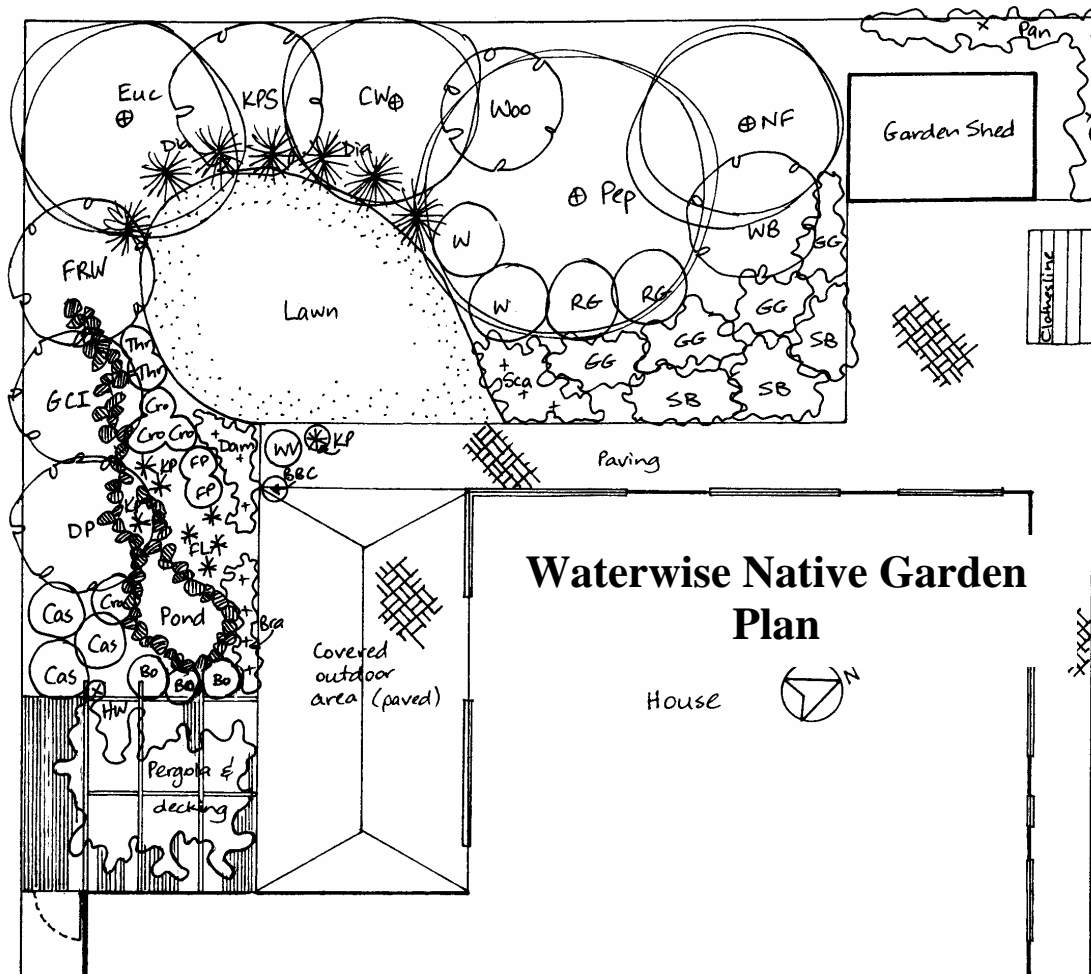
### **O'CONNOR**

388 South Street  
Ph 93147258  
Fax 93147264

### **JOONDALUP**

Cnr Joondalup Drv  
& Cord St  
Ph 93000733  
Fax 93001244

[www.dawsonsgardenworld.com.au](http://www.dawsonsgardenworld.com.au)



### Key To Waterwise Native Garden Plan

**BBC** = Bluebell Creeper  
**Bo** = Boronia  
**Bra** = Brachycome  
**Cas** = Eriostemon Cascade of Stars.  
**Cw** = Cottonwood  
**Cro** = Crowea  
**Dam** = Dampiera  
**Dia** = Dianella  
**DP** = Dwarf Peppermint  
**Euc** = Eucalyptus leucoxyton rosea  
**FL** = Fringe Lily  
**FP** = Flame Pea  
**FRW** = Flinder's range Wattle  
**GCI** = Grevillea Coconut Ice  
**GG** = Grevillea Gin Gin Gem  
**Hw** = Hardenbergia Happy Wanderer-Native Wisteria  
**KP** = Kangaroo Paws  
**KPS** = Bottlebrush king's Park Special.

**NF** = Native Frangipanni  
**Pan** = Pandorea  
**Pep** = Weeping Peppermint  
**RG** = Grevillea Robyn Gordon  
**SB** = Snake Bush (Hemiandra pungens).  
**Sca** = Scaevola Purple Fanfare  
**Thr** = Thryptomene  
**WB** = Wedding Bush  
**W** = Westringia (Coastal Rosemary).  
**Woo** = Woolly Bush

\*\*\* Customers, this plan is provided as an example. The plants used and listed in this leaflet are subject to seasonal availability.  
 Plan by Gia Clarke, Dawson's Joondalup. © Dawson's Garden World 2003.

### Dawson's Landscaping Tips.

1. Reduce lawn areas and plant low water use, native ground-covers instead.
2. Create shelter/windbreaks to reduce water loss by transpiration.
3. Mulching is the most effective way to save water in the garden.
4. Extend a dry creek bed from your pond as a transition area from wet to dry areas.
5. Many Australian plants, provide wonderful cut flowers. Taking flowers also gives them a useful light prune.

*Our qualified staff, are happy to assist you in selecting plants for your garden.*

**Happy gardening!**

**Great Gardens Start At Dawson's**



**FORRESTFIELD**  
 160 Hale Road  
 Ph 94536533  
 Fax 94539520

**SWANBOURNE**  
 153 Railway Street  
 Ph 93849652  
 Fax 93832108

**O'CONNOR**  
 388 South Street  
 Ph 93147258  
 Fax 93147264

**JOONDALUP**  
 Cnr Joondalup Drv  
 & Cord St  
 Ph 93000733  
 Fax 93001244

[www.dawsonsgardenworld.com.au](http://www.dawsonsgardenworld.com.au)