

Essential Plants for a Shady Walk Garden

Trees:

Silver Birch: Deciduous tree, developing an attractive white papery bark. Golden autumn foliage. Ideal for group planting to create a more natural effect. 6-10m H X 3-5m W.

Climbing Plants:

Star Jasmine: (Trachelospermum jasminoides). Evergreen twining climber, glossy foliage and clusters of small, star shaped, jasmine scented, white flowers in late spring and summer. Can also be used as a ground cover.

Ground Covers:

Busy Lissie: (Impatiens). Colourful, long flowering, sappy stemmed perennial. Provides plenty of colour over the warmer months. Range of colours available. 30cm H x 30cm W.

Cyclamen: Autumn and winter flowering perennials. Often intricately patterned foliage. 10-15cm H X 10-15cm W.

Native Violets: Carpeting, perennial. Heart shaped foliage. Small white flowers have a blue centre. 5-10cm H X 0.5-1m W.

Rhoeo: (Moses In The Cradle). Bold foliage plant with lance shaped foliage which is green on top and purple below. 10-15cm H X 20-45cm W.

Foliage Plants:

Bromeliads: Tropical plant forming a vase-like rosette of foliage. Can be grown in pots, in the ground or on tree trunks and branches! 15- 30cm H X 15-30cm W.

Holly Fern: One of the hardiest of ferns. Deeply lobed, tough glossy foliage. Forms a spreading clump. 15-30cm H X 30cm W.

Madonna Lily: Impressive, large glossy leaves and white sail-like flowers in summer-autumn. 30-70cm H X 60cm W.

Rojo Congo: Bold foliage Philodendron with large glossy, red tinged leaves. 0.6-1m H X 0.5-1m W.

Variegated Aspidistra: Cast Iron Plant. Utterly indestructible perennial. Attractive tapering foliage is variegated green and white. 30-60cm H X 30-60cm W.

Shrubs:

Camellia Sasanqua: Flowers autumn to early winter. Generally taller and more open growing than japonicas. Grows to 1.5 to 4m high. Ideal screens and hedges. Sasanquas are more sun tolerant than japonicas.

Chinese Scared Bambo: Evergreen. Ferny foliage. Newer foliage turns red in winter. White flowers in autumn followed by red berries. 1.5m H X 2m W.

Cordyline: Colourful foliage shrubs. Variety of leaf colours available. 1.5-2m X 0.5-1m W. Red and pink leaf forms are particularly attractive.

Dracaena: Evergreen shrubs to small trees. Rosettes of narrow strap shaped foliage held on bare branches. Develop very sculptured forms. 1.5-3m H x 2-3m W



FORRESTFIELD

160 Hale Road
Ph 94536533
Fax 94539520

SWANBOURNE

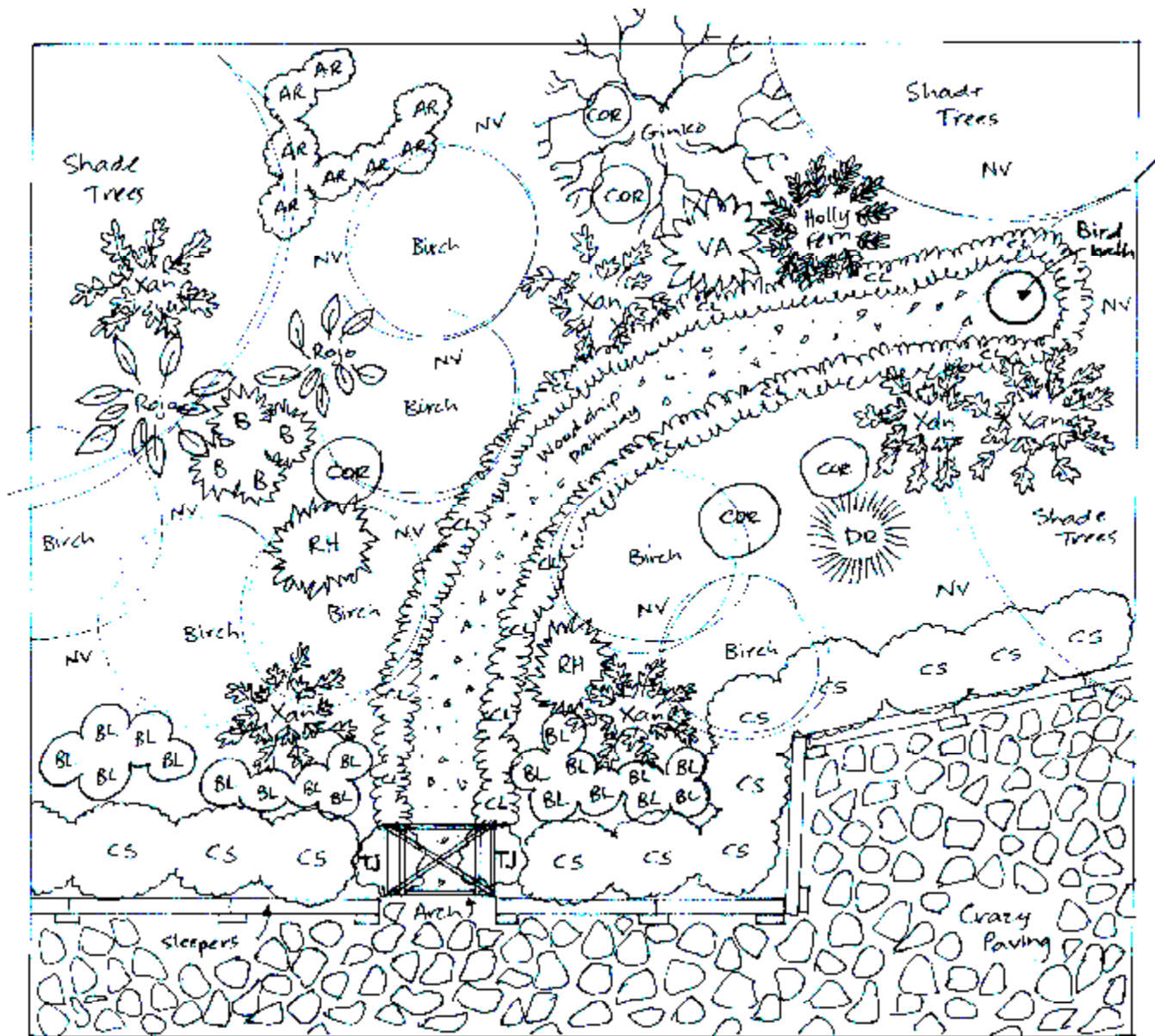
153 Railway Street
Ph 93849652
Fax 93832108

O'CONNOR

388 South Street
Ph 93147258
Fax 93147264

JOONDALUP

Cnr Joondalup Drv
& Cord St
Ph 93000733
Fax 93001244



Key to shady walk Garden

- B= Bromeliads
- BL= Busy Lissie (Impatiens).
- CL= Clivia (Kaffir Lily)
- COR= Cordyline
- CS= Camellia sasanqua
- CSB= Chinese Sacred Bamboo
- CY= Cyclamen
- DR= Dracaena
- Holly Fern**
- M= Madonna Lily
- NV= Native Violet
- R= Rhoeo (Moses In The Cradle)
- Rojo=** Philodendron Rojo Congo
- SB= Silver Birch
- TJ= Star Jasmine
- VA= Variegated Aspidistra
- Xan= Xanadu

Shady Walk Garden

Shady parts of the garden provide opportunities to create relaxing garden rooms. In this shady walk garden, a restful garden is created by using a selection of semi shade tolerant plants.

Getting Started

Prior to planting, dig in plenty of Dawson's Soil Improver to enrich the soil. After planting apply a soil wetter like Aqua Wett or Grosorb, around your plants. Soil Wetters allow your precious irrigation water to penetrate more effectively into our often water repellent local soils. Water new plants every second day (over the warmer months) until well established.