

Japanese Garden

Japanese gardens have a relaxing simplicity. The plants and features used in Japanese gardens are highly symbolic. Each feature of the garden is symbolic of the natural landscape. For example rocks represent mountains, pebbles can represent the ocean or rivers and trees represent forests.

Key features: Rocks, pebbles, bamboo screens, water or dry stream beds (symbolic of water), water bowls, Japanese water features, Japanese entrance gate.

Plants

Simplicity is the key. Don't clutter the garden with too much variety. A few well chosen and carefully placed plants will create a restful balance.

Trees

Flowering Plum (Prunus blieriana)- Red/green foliage, double pink blossom in spring. 4m X 4 wide.

Japanese Maple- Attractive, deeply lobed foliage. Brilliant autumn colour. 3m X 3m.

Kentia Palm- Slow growing palm. Attractive feather like leaves. Grows best in filtered light situations. Very old specimens can reach heights of 8-15 metres.

Weeping Apricot- Beautiful weeping tree. Double crimson blossom late winter-spring. 3m H X 3m W.

Shrubs

Azaleas- Evergreen shrubs. Flowering mainly winter and spring. Sizes range from small 30-40 cm high to taller varieties which can reach 1.5-2m high. Best planted in semi shade areas, although there are also many sun tolerant varieties for sunny spots.

Camellia japonica- Bushy evergreen shrubs with glossy foliage. Huge diversity of flowers forms and colours available. Grows to 3m X 2-3m wide. Require filtered light or early morning sun and afternoon shade. Later winter to spring flowering.

Camellia sasanqua- Flower autumn to early winter. Generally taller and more open growing than japonicas. Grow to 1.5 to 4m high. Ideal screens and hedges. Sasanquas are more sun tolerant than japonicas.

Chinese Sacred Bamboo- Evergreen. Ferny foliage. Newer foliage turns red in winter. White flowers in autumn followed by red berries. 1.5m H X 2m W.

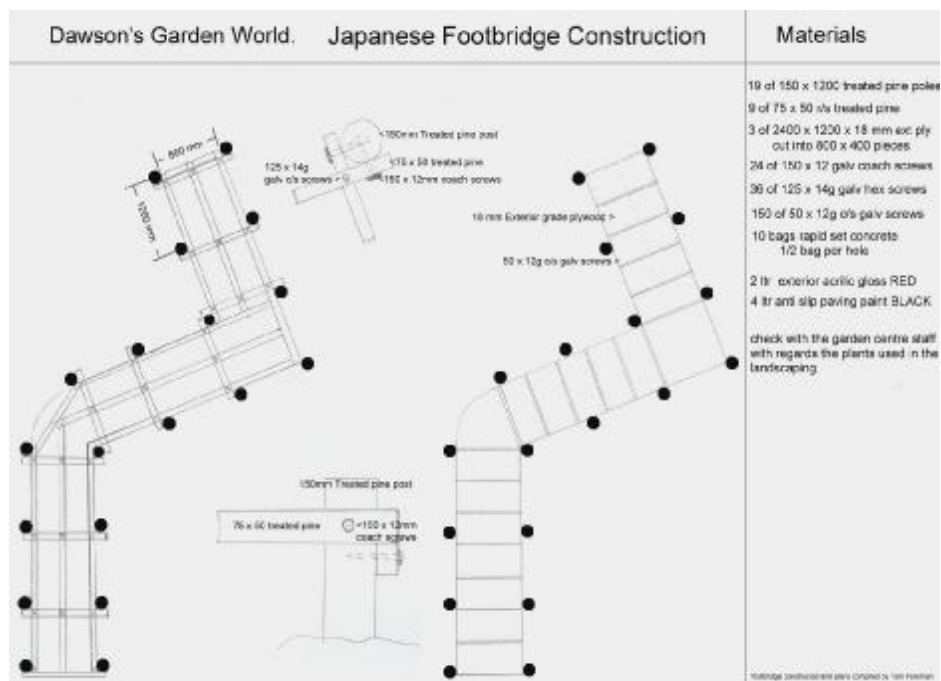
Dwarf Sacred Bamboo- Dwarf evergreen rounded shrub. Foliage displays a variety of colours, red ,brown, Green, orange and scarlet. Foliage colour intensifies in winter. 80cm H X 80 cm W.

Perennials

Evergreen Giant-Grass- like foliage. Spikes of purple flowers late summer-autumn. 1m H X 60cm W.

Silver Dragon- Grass-like plant with dark green foliage which stripped silvery white. 50cm H X 50cm wide. Spikes of pale lilac flowers late summer.

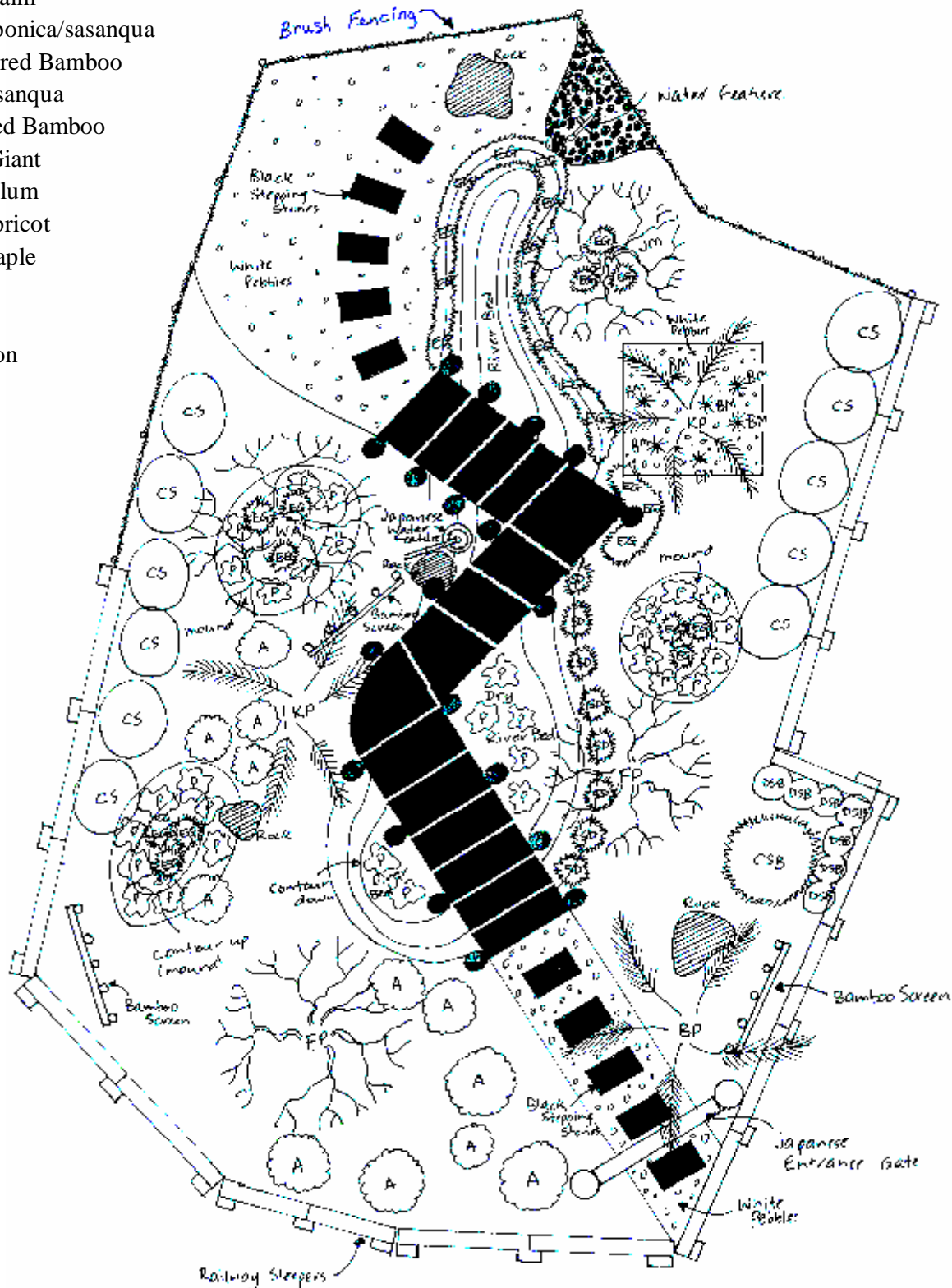
White Pratia- Evergreen, carpeting groundcover. Height to 5cm. White star shaped flowers from spring to early summer.



- A = Azalea (clipped)
- BM = Black Mondo Grass
- BB = Brush Box Tree
- BP = Bangalow Palm
- CS = Camellia japonica/sasanqua
- CSB = Chinese Sacred Bamboo
- CS = Camellia sasanqua
- DSB = Dwarf Scared Bamboo
- EG = Evergreen Giant
- FP = Flowering Plum
- WA = Weeping Apricot
- IM = Japanese Maple
- P = Pratia
- KP = Kentia Palm
- SD = Silver Dragon

J
A
P
A
N
E
S
E

G
A
R
D
E
N



FORRESTFIELD
160 Hale Road
Ph 94536533
Fax 94539520

SWANBOURNE
153 Railway Street
Ph 93849652
Fax 93832108

O'CONNOR
388 South Street
Ph 93147258
Fax 93147264

JOONDALUP
Cnr Joondalup Drv
& Cord St
Ph 93000733
Fax 93001244