

# *Mediterranean Garden Planting Guide*

*Create a garden reminiscent of the sun-drenched Mediterranean. Perth enjoys a magnificent Mediterranean climate, so this style of garden thrives here. Mediterranean gardens are naturally Waterwise, so it's a great way to go! Our planting list draws plants from Mediterranean regions the world over, to create an authentic Mediterranean style garden here in W.A.*

**Key features:** Ornamental grape covered pergola, potted Geraniums, Citrus, Rosemary and Diosma hedges, terracotta pots, blue painted features, limestone and mosaics.

## **Trees**

*Signature trees for Mediterranean style gardens include; Oranges and Lemons dripping with fruit, silvery Olives trees dancing in the wind and classic Cypress trees remind us of a Van Gough painting.*

Citrus Trees including Lemons and Oranges. Cabbage Tree (Cordyline australis), Cupressus Castlewellan Gold, Dragon Tree, smaller growing Gum Trees, Eucalyptus, Mediterranean Cypress Sky Rocket, Swane's Gold and Stricta, Evergreen Ash, Olive Trees, Chinese Tallow, Jacaranda, New Zealand Christmas Tree, Norfolk Island Hibiscus Tree.

## **Shrubs**

*Our Mediterranean shrub selection are a hardy bunch, once established, easily able to survive our hot, dry Summers on two waterings a week. Classic Mediterranean shrubs include long flowering Oleander, Plumabgo and our own W.A. native, Woolly Bush.*

Bottlebrush including Endeavour and Perth Pink, Cape Wedding Bush, Cushion Bush, Gardenias, Geraldton Wax, Indian Hawthorn, Metrosideros Fiji, Mirror Bush, Oleander, Orange Jessamine, Night Scented Jasmine, Plumbago, Proteas, Lauistinus, Westringia, Woolly Bush, Yucca Bright Edge and Elephantipes.

## **Perennials**

*You couldn't have a Mediterranean garden with- out potted Geraniums. Try some New Zealand Flax in tall glazed pots and a collection of potted succulents for a stunning result. Rosemary and Lavender are so useful and Wild Iris are great for massing.*

Agave Attenuata (Fox Tail), Clivia (Kaffir Lily), Coreopsis, Flax Lily (Dianella), Gazania, Geraniums, Lavender, Liriopes including Evergreen Giant, New Zealand Flax, Rosemary, Scaevola, Succulents, Wild Iris and Wormwood.

## **Climbers**

*Bougainvillea is the classic Mediterranean climber so hardy and long flowering in our climate. While sharing a wine under a grape covered pergola is part of the magic of the Mediterranean garden.*

Bougainvillea, Native Wisteria, Ornamental and Fruiting Grapes, Pandorea, Potato Creeper and Red Brazillian Jasmine.



### **FORRESTFIELD**

160 Hale Road  
Ph 94536533  
Fax 94539520

### **SWANBOURNE**

153 Railway Street  
Ph 93849652  
Fax 93832108

### **O'CONNOR**

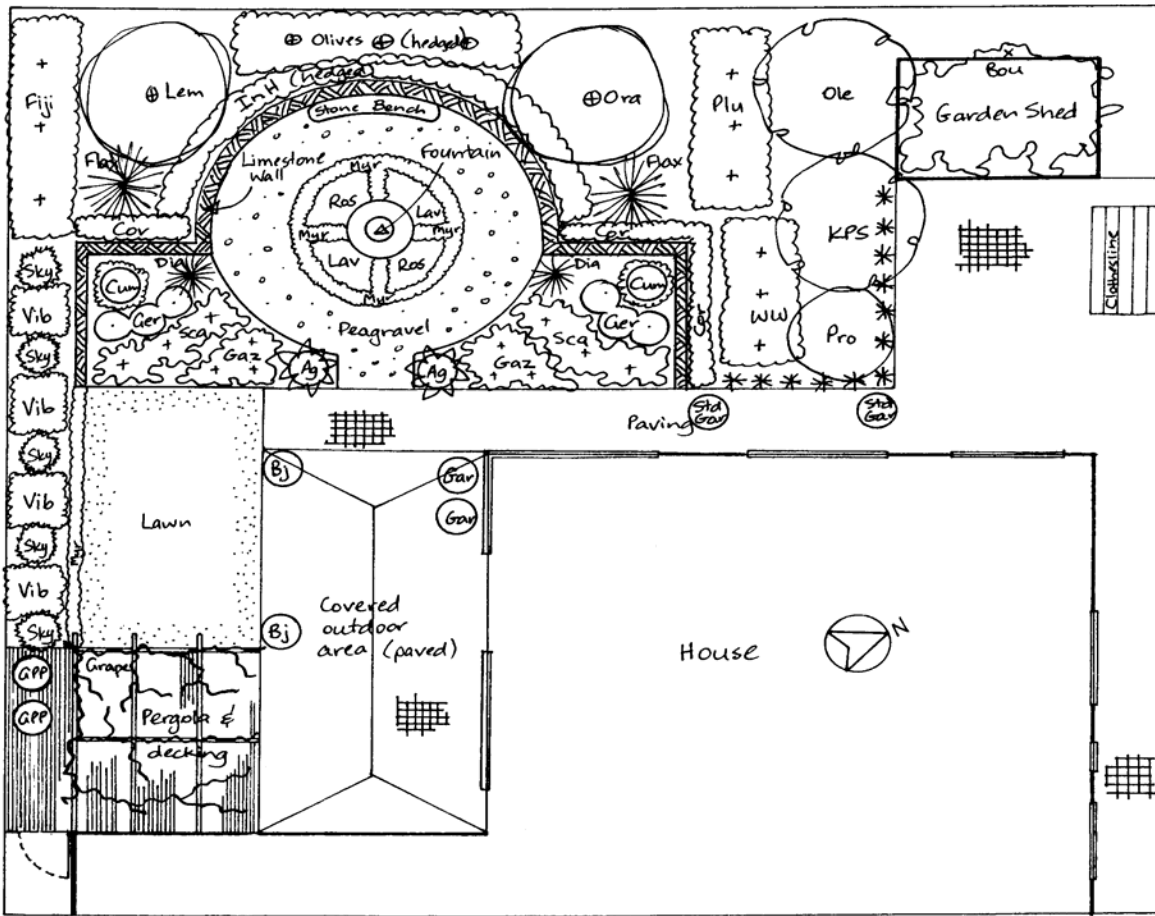
388 South Street  
Ph 93147258  
Fax 93147264

### **JOONDALUP**

Cnr Joondalup Drv  
& Cord St  
Ph 93000733  
Fax 93001244

[www.dawsonsgardenworld.com.au](http://www.dawsonsgardenworld.com.au)

# Mediterranean Garden Plan



**Ag** = Agave attenuata (potted)

**Bj** = Brazillian jasmine

**Bou** = Bougainvillea

**Cor** = Coreopsis

**Cum** = Cumquat Nagami

**Dia** = Dianella

**Fla** = Flax

**Fiji** = Metrosideros Fiji  
(hedged)

**Gar** = Gardenia (potted)

**Gaz** = Gazania

**Ger** = Geraniums

**GPP** = Golden Pencil Pine  
(topiary-potted)

**Grape** = Grape vine.

**InH** = Indian Hawthorn  
(hedged).

**KPS** = Bottlebrush King's Park  
Special.

**Lav** = Lavender

**Lem** = Lemon

**Lir** = Liriopes

**Myr** = Myrsine - African

Boxwood (hedged).

**Ole** = Oleander

**Olives** = Olives (hedged)

**Ora** = Orange

**Plu** = Plumbago (hedged)

**Pro** = rotea

**Ros** = Rosemary

**Sca** = Scaevola

**Sky** = Juniper Skyrocket

**Vt** = Viburnum tinus  
(hedged).

**ww** = Wormwood- Artemisia  
(hedged).

\*\*\* Customers, this plan is provided as an example. The plants used and listed in this leaflet are subject to seasonal availability\*\*\*

Plan by Gia Clarke, Dawson's Joondalup. © Dawson's Garden World 2003.

## Dawson's Landscaping Tips.

1. Always use Dawson's Soil Improver when planting.
2. Planting in groups is an old landscaping trick, it looks more natural and effective.
3. Mulching is the most effective way to save water in the garden.
4. Make plants stand out more by planting in pots or place a coloured lattice screen behind to create focus.
5. Carefully select trees in proportion to your garden.

*Our qualified staff, are happy to assist you in selecting plants for your garden.*

*Happy gardening!*

**Great Gardens Start At Dawson's**



**FORRESTFIELD**

160 Hale Road  
Ph 94536533  
Fax 94539520

**SWANBOURNE**

153 Railway Street  
Ph 93849652  
Fax 93832108

**O'CONNOR**

388 South Street  
Ph 93147258  
Fax 93147264

**JOONDALUP**

Cnr Joondalup Drv  
& Cord St  
Ph 93000733  
Fax 93001244

[www.dawsonsgardenworld.com.au](http://www.dawsonsgardenworld.com.au)